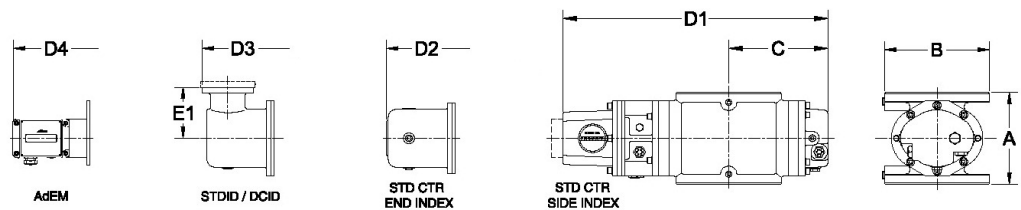
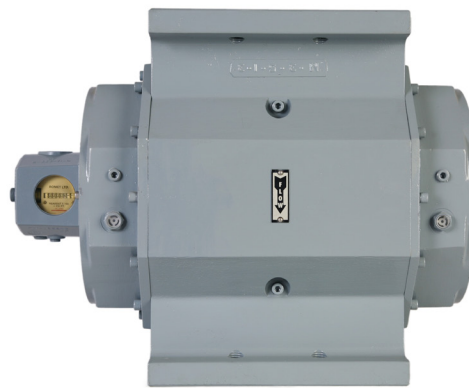




**ROMET**

# Rotary Gas Meters



Note: AMI/AMR adaptors available upon request.

METER SIZE	ANSI 125 FF FLANGE	A	B	C	D1	D2	D3	D4	E1	WEIGHT (lbs)
RM25000	6"	16.00"	11.25"	8.93"	20.95"	22.43"	23.21"	24.15"	4.00"	126

**RM25000 - IMPERIAL**

# IMPERIAL RM25000 6" FLANGE CONNECTION

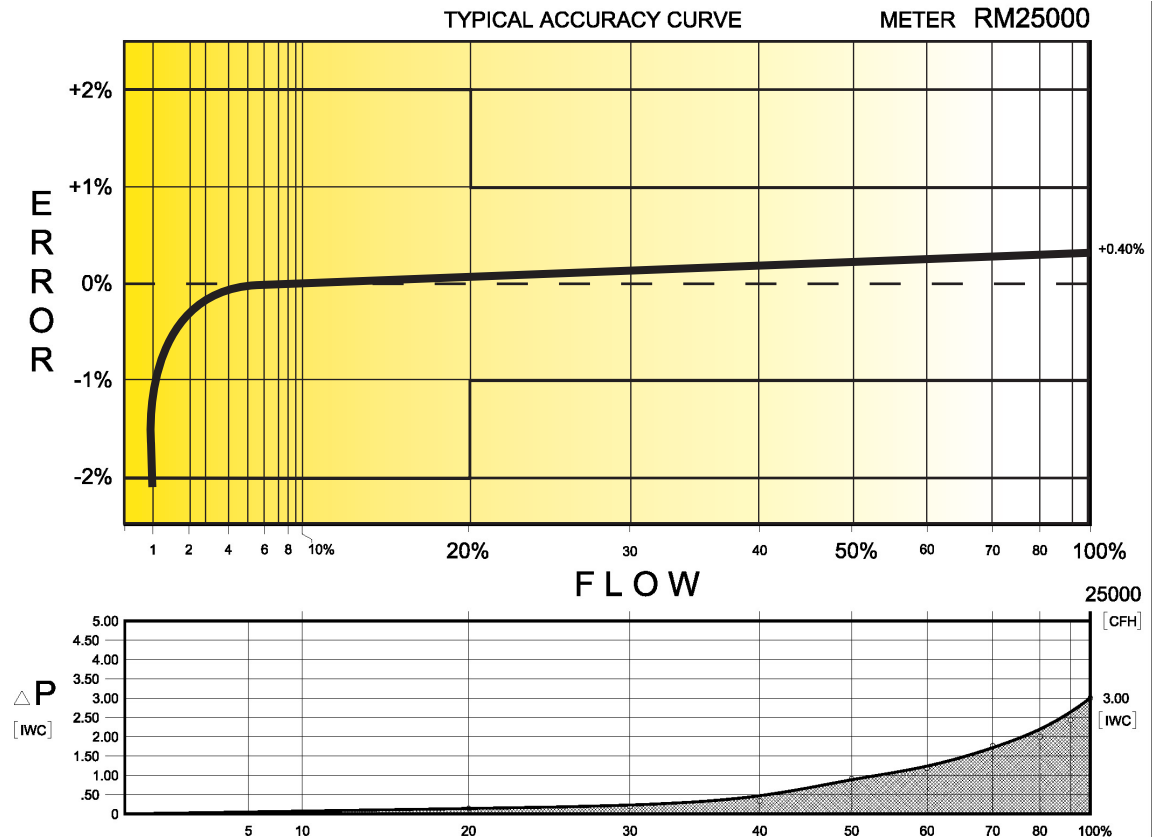
## TECHNICAL SPECIFICATION

Connection (Flanged)	ANSI 125 FF	6"
MAOP	(psig)	175
Flow Capacity	(cfh)	25000
Rangeability* (up to 1:160 @ atmospheric condition)		1:160
Start Rate	(cfh)	14.5
Stop Rate	(cfh)	8.0
Differential @ 100% Flow	(I.W.C.)	3.00
Instrument Drive Rate	(cf/rev)	100
LF Pulser (Optional)	(cf/pulse)	100

\*Note: It should be noted, that moving parts in the meters with greater rangeability ratio are made to high class accuracy and tight tolerances. Improper installation, stresses on piping system due to temperature changes, settling and gas conditions can create a risk of meter rejection.

### CORRECTED FLOW CAPACITY AND TYPICAL ACCURACY GUIDE

RM25000 METER (SCFH)	
Gauge Pressure P.S.I.G. 0.25	RM25000 Qmax = 25000ft <sup>3</sup> /hr
2	26137
5	32926
10	41412
15	49898
20	58384
25	66870
50	109300
75	151731
100	194161
125	236592
150	279022
175	321453



# ROMET

**GAS METERS AND ELECTRONIC INSTRUMENTS**  
 Phone 905-624-1591 USA 1-800-387-3201  
 www.rometlimited.com • email: romet@rometlimited.com

The values quoted are typical of normal production. They do not constitute a specification. Romet Limited reserves the right to change any information in this literature without notice. All of the information and data in this literature has been carefully compiled and thoroughly checked. However, Romet Limited will not assume responsibility for any possible omissions or errors.  
 ROMET and ROMET & DESIGN are registered trademarks of Romet Limited. Romet Limited's gas metering technology is protected under U.S. Patent No. 4,910,519 and 6,453,721 and Canadian Patent No. 1,293,568.